

DIGITRON SEMICONDUCTORS

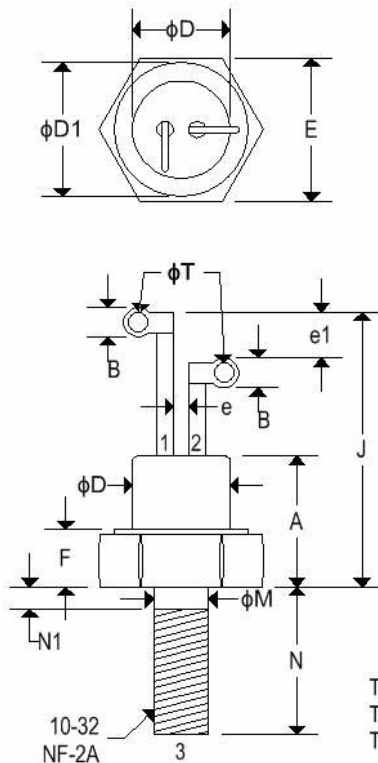
MECHANICAL CASE OUTLINE PACKAGE DIMENSIONS

DATE 31 May 2016

CASE TO-64

STUD

CASE	HERMETICALLY SEALED METAL AND GLASS
MARKING	ALPHA NUMERIC
WEIGHT	5.080 GRAMS (APPROXIMATE)



	TO-64			
	Inches		Millimeters	
	Min	Max	Min	Max
A	0.300	0.410	7.620	10.414
B	0.080	0.140	2.030	3.556
ΦD	-	0.424	-	10.770
ΦD₁	0.400	-	10.160	-
E	0.424	0.437	10.770	11.100
e	0.013	-	0.330	-
e₁	0.060	-	1.520	-
F	0.060	0.175	1.520	4.450
J	0.700	0.855	17.780	21.720
ΦM	0.163	0.189	4.140	4.800
N	0.400	0.453	10.160	11.510
N₁	-	0.078	-	1.980
ΦT	0.040	0.075	1.020	1.910

This drawing is for reference only. Please refer to Digitron's published datasheet.